

# TIJ

Thermal Inkjet Printer



Wuhan Xiantong Technology Co., Ltd.

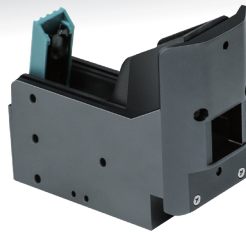
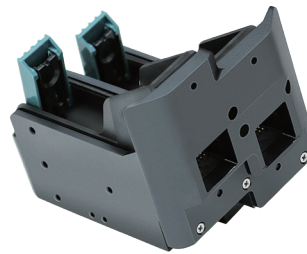
Web: [www.meenjet.net](http://www.meenjet.net)

Email: [info@meenjet.net](mailto:info@meenjet.net)

Mobile: +86 181 0715 2038

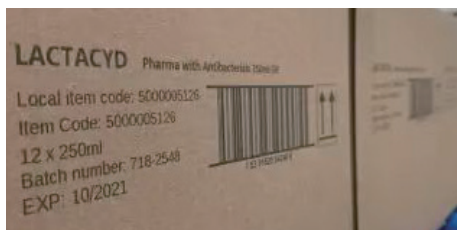
# MXPlus Series

## Inline Inkjet Printer



- ① Fully metallic body with a 7-inch capacitive touch screen.
- ② Simple installation and friendly user interface.

- ③ 7-24 hours stable continuously running.
- ④ Flexible user administration, 3 level available.



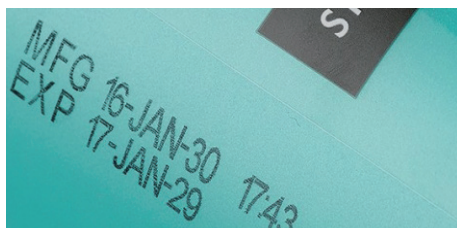
Cartons



Bottles



Polybags



Cosmetics



Lables











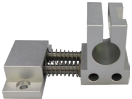




Paper Boxes

## Parameters

<b>Technology</b>	HP TIJ2.5 Thermal Inkjet Technology
<b>DPI</b>	50~1200DPI
<b>Print Distance</b>	2-5 mm
<b>Print Height</b>	1-25.4mm (1-2 heads)
<b>Print Speed</b>	Maximum 120 m/min (high-speed mode)
<b>Print Content</b>	Date, Time, Text, Batch Number, Image, Barcode, QR Code, Database
<b>Ink Type</b>	Aqueous / Solvent base / UV ink
<b>Ink Color</b>	Black, White, Red, Yellow, Blue, Green, Invisible
<b>Languages</b>	Arabic, Chinese, English, French, German, Greek, Italian, Korean, Persian, Portuguese, Russian, Spanish, Thai, Turkish, etc. (support customization)
<b>Communication Protocol</b>	RS232
<b>Interface</b>	USB, DB9 serial port, I/O, External encoder, Photocell sensor
<b>Working Condition</b>	Temperature 0-45°C (the best: 20-30°C), humidity 40-60%Rh
<b>Adapter Parameter</b>	Input: 100-240V AC; Output: 12V/4A DC

## Dimension & Accessories

Standard List				Optional Parts		
						
① Metal box	③ Controller	⑤ Power adapter			② Alarm light	
						
② Inline mounting bracket	④ Print head	⑥ Photocell sensor	⑦ Communication cable	③ High precision adjustment component		
						
				④ Anti-shock mount	⑤ Spring-back holder	⑥ Encoder

