



LASER

Laser Marking Machine



Wuhan Xiantong Technology Co., Ltd.

Web: www.meenjet.net

Email: info@meenjet.net

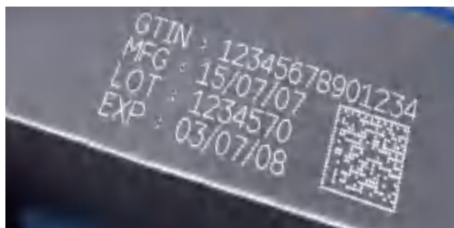
MC Series

CO2 Laser Marking Machine (30W/40W/60W)



- ① Support serial port to add alarm light, ESTOP etc.
- ② Supports to connect vision systems on production line.

- ③ Through ethernet to transfer variable data and realize computer remote operation.
- ④ Faster speed and wider printing range.



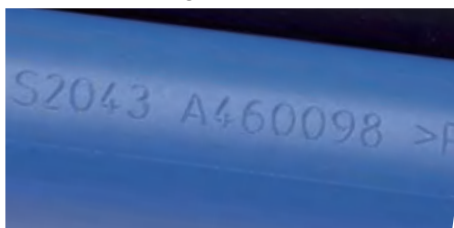
Corrugated Carton



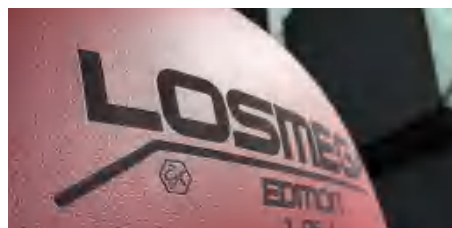
Pet Bottle



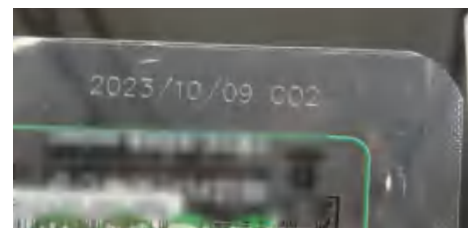
Wood



Pipes



Leather










Plastic Bags

Parameters

Model	MC30	MC40	MC60
Laser	CO2 laser source		
Watt	≥ 38w	≥ 43w	≥ 70w
Wavelength	Standard:10.6μm; Optional:10.2 or 9.3μm(Customization accepted)		
Marking Speed	≤ 12000mm/s (High-speed galvanometers available)		
Focus Lens	Focal length:145mm		
Cooling System	30/40w Air-cooled; 60w Water-cooled		
Power Supply	110V/220V,50/60HZ 750w		110V/220V,50/60HZ 1500w
Environment	Outside temperature0-45°C ; Humidity ≤ 95% ; Non-condensing; No vibration		
Operation System	Linux		
Main Control	Touch screen control		
Marking Size	110*110mm(Optional:110~300mm)		
Language	Arabic, German, Greek, English, Spanish,Persian, French, Italian, Japanese, Korean, Portuguese, Russian, Thai, Turkish, Vietnamese, Chinese Simplified, Chinese Traditional, etc.(Supprot customization)		
Support	Contents:Text, Date, Draw, Graph, Barcode, OR Code, etc. Barcode:CODE39,CODE128,CODE126,UPC-A,UPC-E,EAN-13,EAN-8.		
Marking Materials	Bamboo, Wood, Paper, Carton, ABS, PVC, Acrylic, Leather, Glass, Rubber, Epoxy resin, Architectural ceramics, etc.		
Industrial Application	Pharmaceutical packaging, Food packaging, Beverage packaging, Plastics, Textiles, Leather, Wood, Handicrafts, Communications, Watches, Glasses, Printing, Electronic components industry and other industries.		

Dimension & Accessories



Standard List		
 <p>① Bracket</p>	 <p>② Touch screen</p>	 <p>③ laser host</p>
	 <p>④ Cable</p>	 <p>⑤ Photocell sensor</p>
	 <p>⑥ Encoder</p>	 <p>⑦ Tool kit</p>